

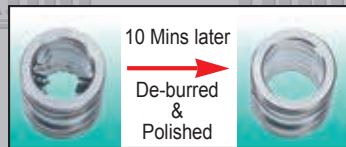
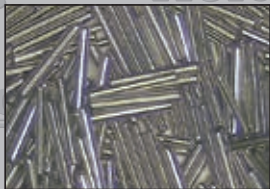


Magnetic De-burring & Polishing Machine



De-burring, Polishing, Cleaning

Special PIN Media Deburrs



HD-765



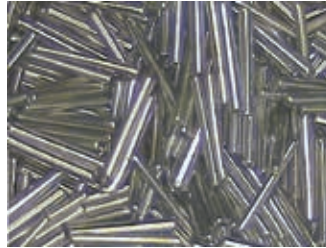
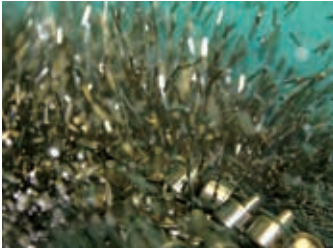
Deburr Small Parts With Swarming Stainless Pins



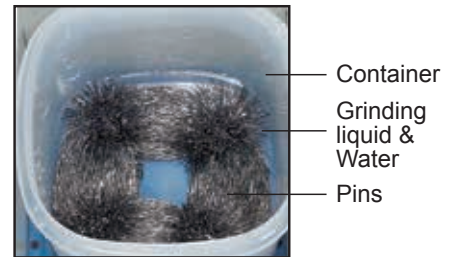
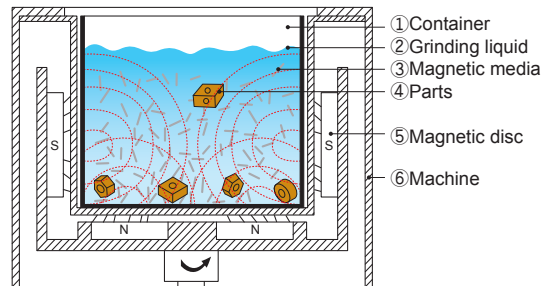
Magnetic De-burring Machine Inventor

the SPINner Magnetic De-burring & Polishing Machine >>

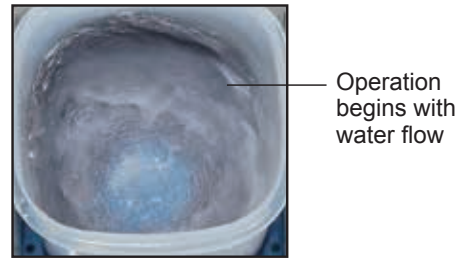
The magnetic de-burring & polishing machine makes use of innovative and patented magnetic field power to induce the stainless steel media (PIN) to rotate rapidly for workpiece grinding and get high-efficiency de-burring, polishing, cleaning, and grinding effects.



Principle:

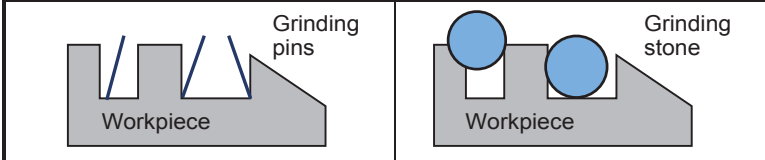


RUN ↓



the SPINner Outstanding advantages and features >>

Magnetic de-burring machine parts VS. Traditional grinder's shortcomings



The patented grinding pins work for holes, seams, concave right angles, threads, and other fine parts of the workpiece with a very high speed. It takes only about 5 to 20 minutes to finish the grinding.

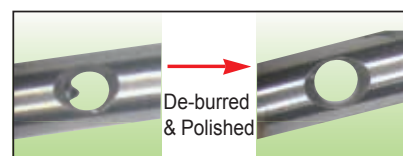
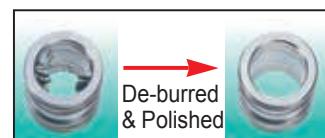
- De-burred, polished, cleaning
- Sintering, tool marks removal
- Joint line removal
- Remove oxide films
- Rubber and plastic deburr
- Copper increase surface hardness.

the SPINner Strong special grinding effects >>

- Specially design for irregular-shaped parts. De-burring, polishing, cleaning, and grinding simultaneously.
- High speed grinding, easy and safe to operate, requiring no consumable, and low cost.
- The grinding never deforms the workpiece, never damages the surface, and never affects the accuracy of the precision of the workpiece.

Apply to

- CNC lathes processing the parts
- aluminum, zinc pressurizing part
- precision stamping parts
- precision springs, spring bands
- aerospace, medical equipment parts
- electronic component





Wide range of application De-burring, Polishing, Cleaning

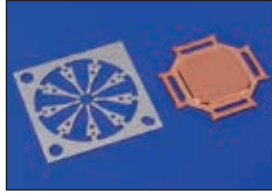
CNC lathes processing the parts



Zinc alloy, aluminum



Precision stamping parts



Stainless steel casting parts



Rubber and plastic parts



Jewelry copper, zinc pressurizing & cast parts



Stainless steel parts of medical equipment



Bicycle industrial aluminum parts



Aerospace industrial aluminum parts



Zinc alloy parts



Range of applications



Copper-made products



Stainless steel products



Decorated with copper and gold products



Press products



Aluminum-made products



Zinc alloy die-casting products



Medical equipment products



Large-sized products



Grinding effect comparative



Part



Before



After



Part



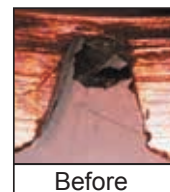
Before



After



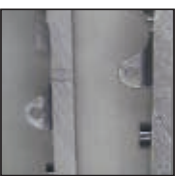
Part



Before



After





Standard Model (Apply to Metal Parts)

HD-765

▶ 12KG grinding capacity



5

HD-750

▶ 8KG grinding capacity



7

HD-745

▶ 5KG grinding capacity



9



Function Model (Laborsaving, mass production, long workpieces, ferrous metals)

HD-768

▶ 12KG grinding capacity



6

- Grinding container saving and lifting automatically equipment

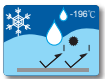
HD-7335

▶ 9KG grinding capacity



8

- Triple spindle (Grind & Separate) (mass production)



Cryogenic Model (Apply to rubber/silicone/plastic/zincalloy)

HD-785



13

HD-780



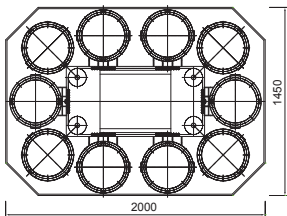
13



Automatic Model

HD-7660

HD-7680



《Feature》

Single operation, mass production, automatic continuous loop grinding, fast production, and automatically add water, grinding liquid, automatic separate workpiece, customized products. Please contact us for more information.



Send us your parts for a free test run in the sPINner.

Index >>

HD-735 ▶ 3KG grinding capacity



9

HD-728 ▶ 1KG grinding capacity



10

HD-716 ▶ 0.2KG grinding capacity



10

HD-7200 Apply to ferrous Metal



11

• Twin-spindle & horizontally move

HD-7400 Apply to a long or large workpiece



12

• Twin-engine & twin-spindle & horizontally move(extra long model)



After polishing and cleaning equipment Powerful bubble wash machine

HD-717



14

HD-727



14



Magnetic Pins Separator

HD-712



14



Stainless Steel Pins



15



Grinding Liquid



15

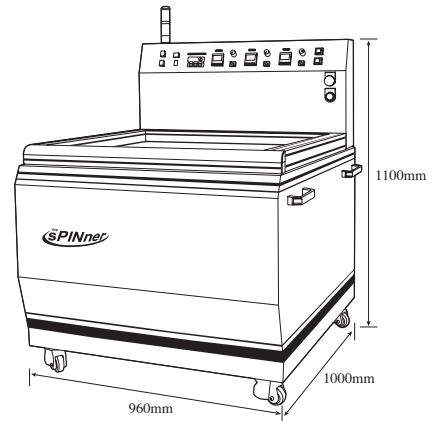
HD-765 (Standard)

12KG grinding capacity



Feature

- Large grinding capacity about 12kg workpiece.
- Large grinding container sizes \varnothing 650x250mm.
- Three kinds of grinding programmed, set speed, time, direction, set the various needs of grinding process.
- Grind setting display, running the display, parameter setting.
- The grinding tank can change different sizes of container and same grinding effect.



Grinding container display (Reference):



- parameter settings
 - Speed Indicator
 - process duration 1
 - process duration 2
 - process duration 3
 - running display
- grinding preset time, grinding speed, grinding direction

MODEL	DIMENSION(L×W×H)	CONTAINER SIZE (φ ×H)	POWER	WEIGHT
HD-765	960×1000×1100mm	φ 650×250mm	3 phase 220/380VAC(50/60HZ)	234KG

MODEL	Max. processing capacity (Reference Value)	STANDARD ACCESSORIES
HD-765	copper 、 stainless steel 、 aluminum 、 zinc(non-magnetic material)	12KG
	iron 、 steel 、 stainless steel(magnetic material)	5KG

1.Stainless pins/12KG(Standard Dimension)
 2.Plastic container/2 set
 3.Separating container/1set
 4.Magnetic sleeve/1set
 5.Grinding liquid/(12,000c.c)
 6.Operation manual

HD-768 (GRINDING CONTAINER AUTOMATIC ELEVATING AND LABOR-SAVEING EQUIPMENT)

12KG grinding capacity



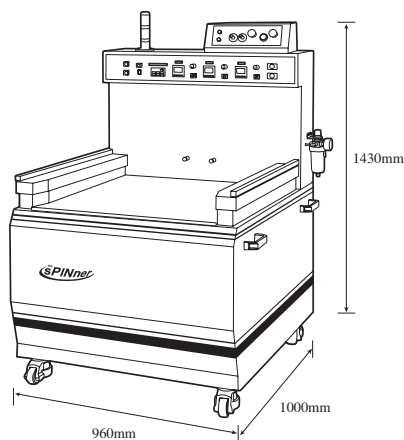
Feature

- Large grinding capacity about 12kg workpiece.
- Large grinding container sizes \varnothing 650x250mm.
- Three kinds of grinding programmed, set speed, time, direction, set the various needs of grinding process.
- Grind setting display, running the display, parameter setting.
- The grinding tank can change different sizes of container and same grinding effect.

Special Function

- Automatic elevating and moving equipment can easily place a large container and operated by one person.
- Patented design of large grinding container lift up, down, back, forward movement, with trolley easy, effort, fast operation.
- Patented automatic control setting simple.

Grinding container display (Reference):



elevating & moving structures

trolley (readymade product)

MODEL	DIMENSION(L×W×H)	CONTAINER SIZE(ϕ ×H)	POWER	WEIGHT
HD-768	960×1000×1430mm	ϕ 650×250mm	3 phase 220/380VAC(50/60HZ)	250KG

MODEL	Max. processing capacity (Reference Value)	STANDARD ACCESSORIES
HD-768	copper \ stainless steel \ aluminum \ zinc(non-magnetic material)	12KG
	iron \ steel \ stainless steel (magnetic material)	5KG

1. Stainless pins/12KG(Standard Dimension)
2. Plastic container/2 set
3. Separating container/1set
4. Magnetic sleeve/1set
5. Grinding liquid/(12,000c.c)
6. Operation manual

- Trolley is additional purchase product.
- Model HD-768 have to supply 7kg/cm² pressure air.

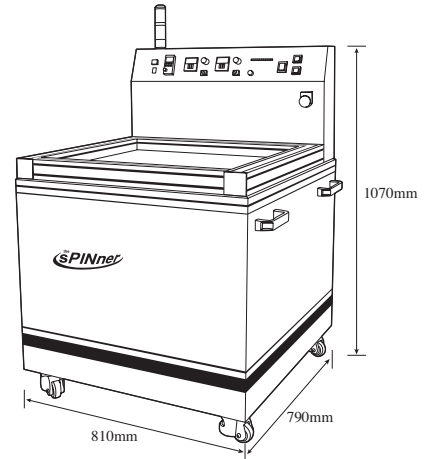
HD-750 (Standard)

8KG grinding capacity

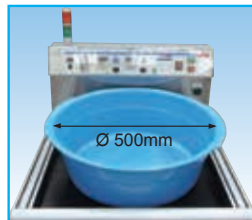


Feature

- Large grinding capacity about 8kg workpiece.
- Large grinding container sizes \varnothing 500x200mm.
- Two kinds of grinding programmed, set speed, time, direction, set the various needs of grinding process.
- Grind setting display, running the display, parameter setting.
- The grinding tank can change different sizes of container and same grinding effect.



Grinding container display (Reference):



- parameter settings
- running display
- process duration 1
- process duration 2
- Speed Indicator
- grinding preset time, grinding speed, grinding direction

MODEL	DIMENSION(L×W×H)	CONTAINER SIZE(L×H)	POWER	WEIGHT
HD-750	810×790×1070mm	\varnothing 500×200mm	Single phase 220VAC(50/60HZ)	150KG

MODEL	Max. processing capacity (Reference Value)	STANDARD ACCESSORIES
HD-750	copper \ stainless steel \ aluminum \ zinc(non-magnetic material)	8KG
	iron \ steel \ stainless steel(magnetic material)	3KG
		1.Stainless pins/6KG(Standard Dimension) 2.Plastic container/4 set 3.Separating container/1set 4.Magnetic sleeve/1set 5.Grinding liquid/(6,000c.c) 6.Operation manual



HD-7335 (Triple Spindle & multifunction) **9KG grinding capacity**

Grind & Grind & Separate

Feature

- Patented triple spindle structure, multi-grinding mode selection, up to the mass production, most convenient, effort.
- Triple spindle, independent three machines easily operate by one person.
- Multifunctional to change different grinding method.
- Grinding and separating magnetic pins and workpiece in one machine.
- Grinding capacity about 3kg workpieces. 3 barrel is approximately 9KG.
- Grinding container sizes Ø350x250mm. The weight and operation is suit for one person.
- The machine is suitable for production of many small parts, with the automation of the production process planning, reaching optimum production model.



Grinding container display (Reference):



Grind & Grind & Grind



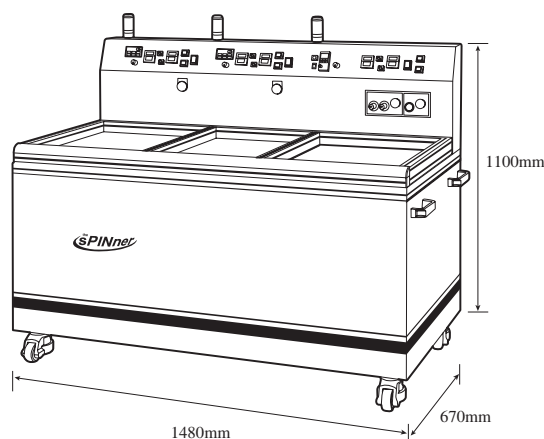
Grind & Grind & Grind



Grind & Grind & Separate



Grind & Grind & Grind



MODEL	DIMENSION(L×W×H)	CONTAINER SIZE(L×H)	POWER	WEIGHT
HD-7335	1480×670×1100mm	φ 350×250mm	3 phase 220/380VAC(50/60HZ)	500KG

MODEL	Max. processing capacity (Reference Value)	STANDARD ACCESSORIES
HD-7335	copper 、 stainless steel 、 aluminum 、 zinc(non-magnetic material)	1 Barrel = 3KG 3 Barrel ≈ 9KG
	iron 、 steel 、 stainless steel(magnetic material)	1 Barrel = 1.5KG 3 Barrel ≈ 4.5KG

1. Stainless pins/12KG(Standard Dimension)
2. Plastic container/6 set
3. Separating container/2set
4. Magnetic sleeve/1set
5. Grinding liquid/(12,000c.c)
6. Operation manual

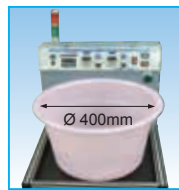
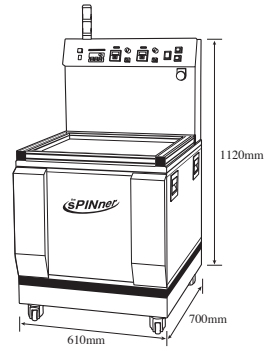
HD-745 (Standard)

5KG grinding capacity



Feature

- Grinding capacity about 5kg workpiece.
- Grinding container sizes Ø 400x300mm.
- Two kinds of grinding programmed, set speed, time, direction, set the various needs of grinding process.
- Grind setting display, running the display, parameter setting.



MODEL	DIMENSION(L×W×H)	CONTAINER SIZE(L×H)	POWER	WEIGHT
HD-745	610×700×1120mm	φ 400×300mm	Single phase 220VAC (50/60HZ)	135KG

MODEL	Max. processing capacity(Reference Value)	STANDARD ACCESSORIES
HD-745	copper 、 stainless steel 、 aluminum 、 zinc (non-magnetic material)	5KG
	iron 、 steel 、 stainless steel(magnetic material)	2KG

- 1.Stainless pins/5KG(Standard Dimension)
- 2.Plastic container/2 set
- 3.Separating container/1set
- 4.Magnetic sleeve/1set
- 5.Grinding liquid/(5,000c.c)
- 6.Operation manual

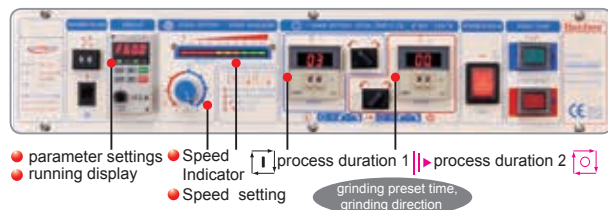
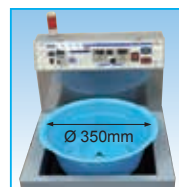
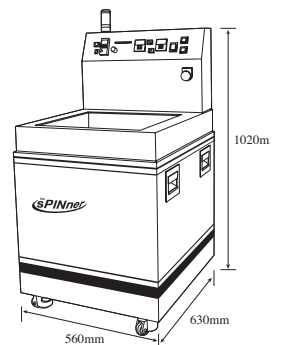
HD-735 (Standard)

3KG grinding capacity



Feature

- Grinding capacity about 3kg workpiece.
- Grinding container sizes Ø 350x160mm.
- Two kinds of grinding programmed, set speed, time, direction, set the various needs of grinding process.
- Grind setting display, running the display, parameter setting.



MODEL	DIMENSION(L×W×H)	CONTAINER SIZE(L×H)	POWER	WEIGHT
HD-735	560×630×1020mm	φ 350×160mm	Single phase 220VAC(50/60HZ)	100KG

MODEL	Max. processing capacity (Reference Value)	STANDARD ACCESSORIES
HD-735	copper 、 stainless steel 、 aluminum 、 zinc (non-magnetic material)	3KG
	iron 、 steel 、 stainless steel(magnetic material)	1.5KG

- 1.Stainless pins/4KG(Standard Dimension)
- 2.Plastic container/4 set
- 3.Separating container/1set
- 4.Magnetic sleeve/1set
- 5.Grinding liquid/(4,000c.c)
- 6.Operation manual



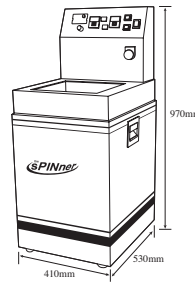
HD-728 (Standard)

1KG grinding capacity



Feature

- Grinding capacity about 1kg workpiece.
- Grinding container sizes \varnothing 260x270mm.
- Two kinds of grinding programmed, set speed, time, direction, set the various needs of grinding process.
- Grind setting display, running the display, parameter setting.



- parameter settings
- running display
- process duration 1
- process duration 2
- grinding preset time, grinding direction

MODEL	DIMENSION(L×W×H)	CONTAINER SIZE(L×H)	POWER	WEIGHT
HD-728	410×530×970mm	\varnothing 260×270mm	Single phase 220VAC(50/60HZ)	65KG

MODEL	Max. processing capacity (Reference Value)	STANDARD ACCESSORIES
HD-728	copper \ stainless steel \ aluminum \ zinc (non-magnetic material)	1KG
	iron \ steel \ stainless steel(magnetic material)	0.5KG

- 1.Stainless pins/2KG(Standard Dimension)
- 2.Plastic container/2 set
- 3.Separating container/1set
- 4.Magnetic sleeve/1set
- 5.Grinding liquid/(2,000c.c)
- 6.Operation manual

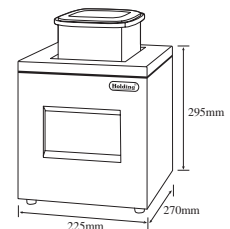
HD-716 (Standard)

0.2KG grinding capacity



Feature

- Desk-type apply to small container of small parts grinding, laboratory grinding samples.
- Grinding container sizes \varnothing 160x160mm.

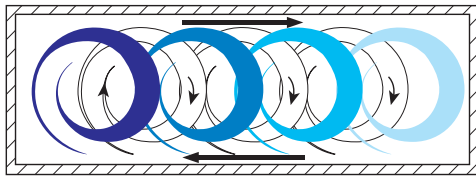


MODEL	DIMENSION(L×W×H)	CONTAINER SIZE(L×H)	POWER	WEIGHT
HD-716	270×225×295mm	\varnothing 160×160mm	Single phase 110/220VAC(50/60HZ)	16KG

MODEL	Max. processing capacity (Reference Value)	STANDARD ACCESSORIES
HD-716	copper \ stainless steel \ aluminum \ zinc (non-magnetic material)	0.2KG
	iron \ steel \ stainless steel(magnetic material)	-

- 1.Stainless pins/1KG(Standard Dimension)
- 2.Plastic container/1 set
- 3.Separating container/1set
- 4.Magnetic sleeve/1set
- 5.Grinding liquid/(1,000c.c)
- 6.Operation manual

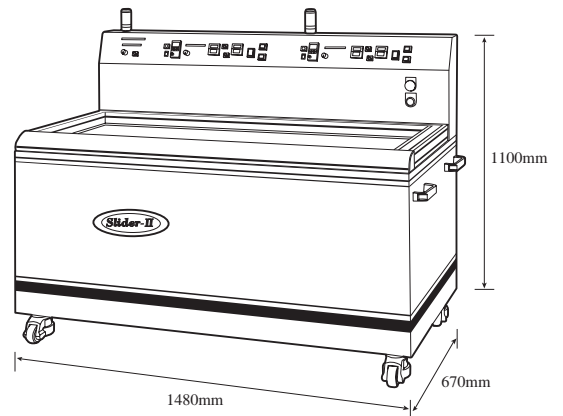
HD-7200 (Twin-spindle & Horizontally movement)



Range of Grinding : 300mmx800mm

Feature

- Patented independent twin-spindle + horizontally movement equipment, grinding without dead corners. Effective grinding area is 800(L) × 300(W)mm
- Independent twin-spindle could separately use. One container have 3KG, and two have 6KG.
- Left-Right traverse of the horizontal movement suitable for magnetic material (iron, stainless steel etc.)



Grinding container display (Reference):



MODEL	DIMENSION(L×W×H)	CONTAINER SIZE(L×H)	POWER	WEIGHT
HD-7200	1480×670×1100mm	Customization	3 phase 220/380VAC(50/60HZ)	500KG

MODEL	Range of Grinding	STANDARD ACCESSORIES
HD-7200	copper 、 stainless steel 、 aluminum 、 zinc(non-magnetic material)	1.Stainless pins/12KG(Standard Dimension) 2.Plastic container/2 set 3.Separating container/1set 4.Magnetic sleeve/1set 5.Grinding liquid/(12,000c.c) 6.Operation manual
	iron 、 steel 、 stainless steel(magnetic material)	

HD-7400 TWIN-ENGINE (Twin-spindle & Horizontally movement) >>

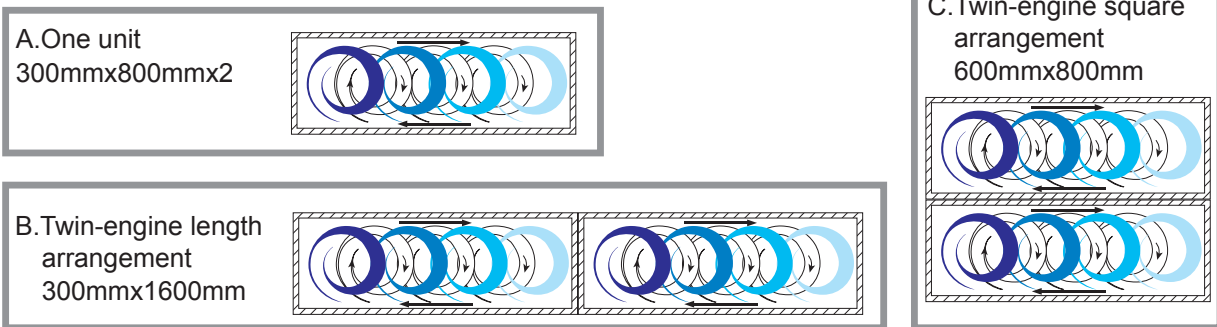


Feature

- Twin- spindle + horizontal movement equipment, two engine could arrange by length and square.
- Long workpiece grinding size is about 300 × 1600 mm
- Largest workpiece grinding size is about 600 × 800 mm
- Fit for variation of grinding container and operation procedure, the biggest size is 800 × 1800 mm
- Flexible and separately to use.
- Suitable for large workpiece.

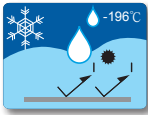


Two-engine combination mode:



MODEL	DIMENSION(L×W×H)	CONTROLLER DIMENSION(L×W×H)	CONTAINER SIZE	POWER	WEIGHT
HD-7400	1480×680×765mm	525×325×1050mm	Customization	3 phase 220/380VAC(50/60HZ)	1000KG

MODEL	Range of Grinding	STANDARD ACCESSORIES
HD-7400	copper 、 stainless steel 、 aluminum 、 zinc(non-magnetic material)	1.Stainless pins/24KG(Standard Dimension) 2.Plastic container/4 set 3.Separating container/1set 4.Magnetic sleeve/1set 5.Grinding liquid/(20,000c.c) 6.Operation manual
	iron 、 steel 、 stainless steel(magnetic material)	



Cryogenics

HD-780 / HD-785

Rubber/Plastic/Silicone/Zinc alloy Remove tiny burrs



Rubber/Plastic/Silicone

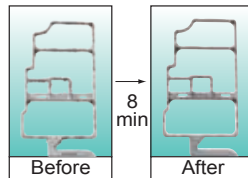
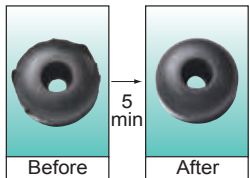


Zinc alloy

Instant and cryogenic embrittlement the soft parts, use magnetic needle with high-speed grinding, remove the holes, cracks, right-angle, surface tiny burr.

Feature

- High Function: Remove the holes, cracks, dead angle and surface tiny burr.
- High Quality: Never damage of the workpiece, 100% yield rate.
- High Efficiency: Only take 3~5 minutes to finish 3~5 KG workpiece.
- Low Cost: Less consumption cost, only need liquid nitrogen.
- Environmental Protection: Easy to operate, high safety.
- Confidence: More than a decade patented magnetic technology to provide you amazing grinding effect.



•••• **Established precise instrumentation and testing methods, welcome to send us your parts for a free test run in the sPINner.** ••••



HD-780



HD-785

MODEL	DIMENSION (L×W×H)	CONTAINERSIZE(L×H)	POWER	WEIGHT
HD-780	610×675×1300mm	φ 400×200mm	Single phase 220VAC (50/60HZ)	140KG

MODEL	Max. processing capacity (Reference Value)	STANDARD ACCESSORIES
HD-780	Zinc alloy	3KG
	Rubber、Plastic、Silicone	1KG

MODEL	DIMENSION(L×W×H)	CONTAINERSIZE(L×H)	POWER	WEIGHT
HD-785	810×795×1300mm	φ 500×200mm	Single phase 220VAC (50/60HZ)	160KG

MODEL	Max. processing capacity (Reference Value)	STANDARD ACCESSORIES
HD-785	Zinc alloy	4KG
	Rubber、Plastic、Silicone	2KG

1. Stainless pins/5KG (Standard Dimension)
2. Stainless container/1 set
3. Separating container/1set
4. Magnetic sleeve/1set
5. Grinding liquid/(5,000c.c)
6. Operation manual



POWERFUL BUBBLE WASH MACHINE

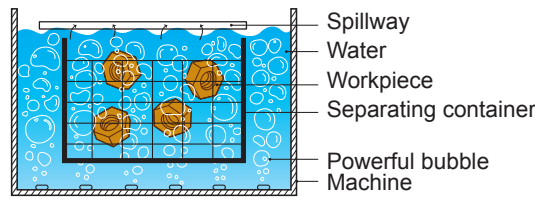
Degrease & Clean

HD-717 / HD-727



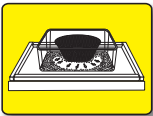
HD-717

- Powerful bubble machine operates begin with water flow in tank, deep into the workpiece holes equivalent effect to stir achieve purposes.
- Could placed with a strong degreaser and achieve rapid results to de-oil and degrease.
- Only 10 seconds immersion, simple effort, good effect.



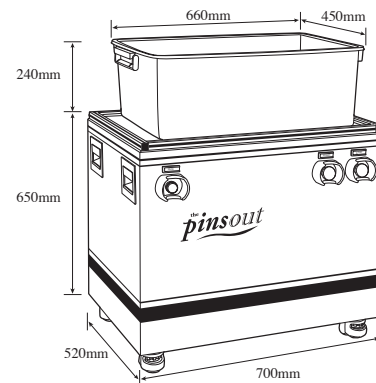
HD-727

MODEL	DIMENSION (L×W×H)	SINK SIZE (L×W×H)	POWER	FEATURE	WEIGHT
HD-717	730×540×805mm	560×420×305mm	Single phase 110/220VAC(50/60HZ)	Single Tank	50kg
HD-727	1460×540×805mm	1120×420×305mm		Double Tank	100kg



Magetic Pins Separator

HD-712



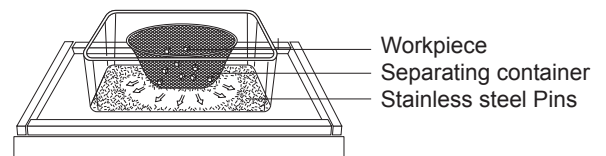
Before



Separating



Finish (about 60 sec)

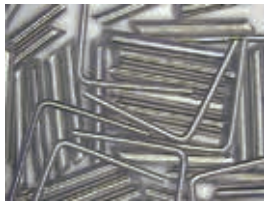


- After grinding machine, easily and quickly separated the stainless steel pins and workpiece. Further have the effect of cleaning the workpiece residues.
- Patented design, use of magnetic force to attract the needle down and quickly disengage the workpiece.

MODEL	DIMENSION (L×W×H)	CONTAINER SIZE(L×W)	POWER	WEIGHT
HD-712	700×520×650mm	660×450×240mm	Single phase 110/220VAC 5A	74KG



Grinding Material: Stainless Steel Pins(SUS304 Magnetic Treatment) (Semi -permanent grinding media)



Standard Dimension

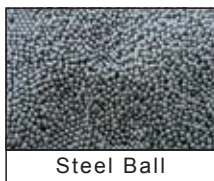
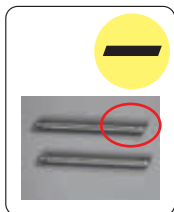
Model	S1	S2	S3	S4	S5
Size(φ ×mm)	φ 0.3×5	φ 0.4×5	φ 0.5×5	φ 0.7×5	φ 0.8×5
Model	S6	S7	S8	S9	S10
Size(φ ×mm)	φ 1.0×5	φ 1.2×5	φ 1.5×5	φ 2.0×5	φ 2.5×5

Special Dimension

Model	P1	P2	P3	P4	P5
Size(φ ×mm)	φ 0.2×5	φ 0.3×3	φ 0.4×3	φ 0.5×1	φ 0.5×3
Model	P6	P7	P8	P9	P10
Size(φ ×mm)	φ 0.7×3	φ 0.8×3	φ 1.0×1	φ 1.0×3	φ 1.2×3

A special corner angle, L-standard Dimension

Model	⊖	A1	A2	A3	A4	Function :
Size(φ ×mm)		φ 1.0×7(45°)	φ 1.0×10(45°)	φ 1.5×7(45°)	φ 1.5×10(45°)	•Strong Cutting Force •Strengthen the surface atomization
Model	⊕	L1	L2	L3	L4	Function :
Size(φ ×mm)		φ 0.5×5×5	φ 0.5×7×7	φ 0.7×5×5	φ 0.7×7×7	•Prevent Pins clip into the workpiece hole



Ceramic Pins

Model	SS1	Function :
Size(φ ×mm)	φ 3.2×9	•Strong Cutting Force •Strengthen the surface atomization

Steel Ball

Model	B1	Function :
Size(φ)	φ 1.6mm	•Add with Pins would strengthen the polishing effect.

Recommended stainless steel magne

- If pins is more rough, then the grinding capacity is more powerful. Therefore, when choose the pins, the material hardness of workpiece will decide the pins. Stainless steel or iron materials can choose pins specification more than 0.5 φ , and for copper and aluminum material of softness, the specification of pins adopts less than 0.5 φ .
 - The rough or fine stainless steel pins will decide the size of bore for work piece. Besides, when grinding the seam inside the hole for work piece, we recommend you to use of pins with 3mm length for better effect.
 - Grinding material of stainless steel is permanent material available for continuous use, a special magnetic pins, can be customer-made on special request.
- The thickness of the pins has varying degrees of effectiveness on grinding surface, and select the acute angle of the pins if the surface of atomization effect is required, however, select a round magnetic pins if the surface of bright effect is required.

Strong environmental protection, polished, cleaned, anti-discoloration slurry (grinding liquid)



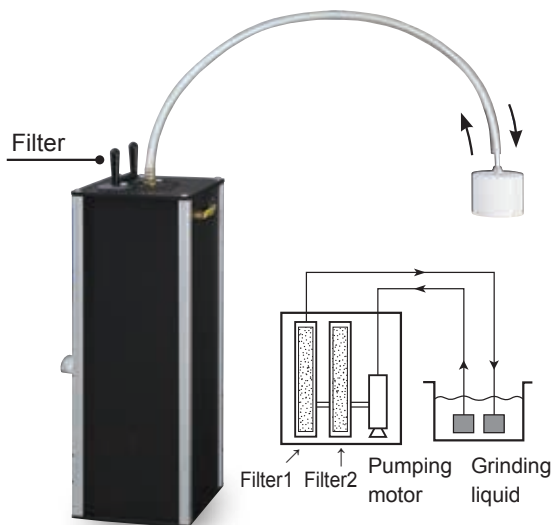
Order NO	The main workpiece materials for application.
233A	Stainless steel, copper, aluminum, titanium category of non-magnetic materials (please dilute in 50 times of the water).
903	Iron, carbon-steel, etc. category of carbon-type magnetic material and rusted material. (please dilute in 50 times of the water).

- The function of liquid : Prevent rust, polishing, cooling and cleaning.
- If the surface contains too much oil, add an additional detergent for cleaning effect.
- The slurry is attached with composition and safety data sheets, ROHS, SGS certification, and is compliance with environmental emission standards.
- Packing:
 - ① 5 gallon (=20,000ml) / barrel
 - ② 1,000ml / bottle



Grinding liquid circulating filter

HD-710



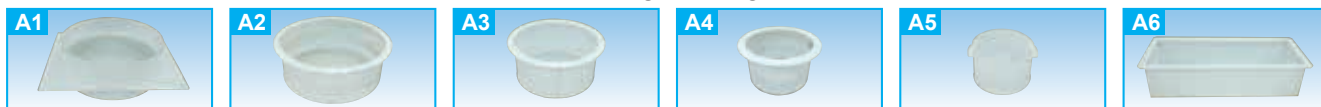
Feature

- Have two system that helps to extracting grinding liquid. They not only filter out impurity, but also extend grinding liquid effectively frequency of use and compliance with environmental standards.
- Filter out impurity generated by grinding, grinding fluid could keep clean and ensure the workpiece abrasive quality.
- Regular replacement filter and low cost.

MODEL	DIMENSION (L×W×H)	CONTAINER SIZE(L×W)	POWER
HD-710	300×300×870mm	φ 70×760mm	Single phase 110/220VAC

the SPINner Accessories

- Container (Customization product) Material : Engineering Plastics 、PP



A1 HD-768 Ø 650x250mm
 A2 HD-765 Ø 650x250mm
 A3 HD-750 Ø 500x250mm
 A4 HD-745 Ø 400x250mm
 A5 HD-735 Ø 350x250mm
 A6 HD-7200 940x370x240mm

- Container (Readymade product) Material : PP



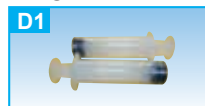
B1 HD-750 Ø 500x200mm
 B2 HD-745 Ø 400x300mm
 B3 HD-735 Ø 350x160mm
 B4 HD-728 Ø 260x270mm
 B5 HD-716 Ø 150x160mm
 B6 Square container 390x280x170mm

- Separating container (Readymade product)



C1 468x340x180mm
 C2 Ø 220x120mm

- Magnetic Sleeve (Presentation pieces)



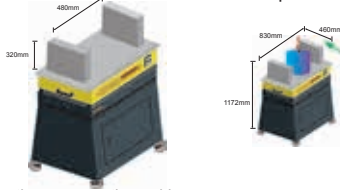
D1 Ø 32x148mm

Specifications

MODEL	DIMENSION (L×W×H)	CONTAINER SIZE(L×W)	POWER	WEIGHT
HD-765	960×1000×1100mm	φ 650×250mm	3 phase 220/380V (50/60HZ)	234 kg
HD-768	960×1000×1430mm	φ 650×250mm	3 phase 220/380V (50/60HZ)	250 kg
HD-750	810×790×1070mm	φ 500×200mm	Single phase 220V (50/60HZ)	150 kg
HD-7335	1480×670×1100mm	φ 350×250mm×3	3 phase 220/380V (50/60HZ)	500 kg
HD-745	610×700×1120mm	φ 400×300mm	Single phase 220V (50/60HZ)	135 kg
HD-735	560×630×1020mm	φ 350×160mm	Single phase 220V (50/60HZ)	100 kg
HD-728	410×530×970mm	φ 260×270mm	Single phase 220V (50/60HZ)	65 kg
HD-716	270×225×295mm	φ 160×160mm	Single phase 110V/220V (50/60HZ)	16 kg
HD-7200	1480×670×1100mm	customization	3 phase 220/380V (50/60HZ)	500 kg
HD-7400	2800×670×765mm	customization	3 phase 220/380V (50/60HZ)	1000 kg
HD-780	610×675×1300mm	φ 400×200mm	Single phase 220V (50/60HZ)	140 kg
HD-785	810×795×1300mm	φ 500×200mm	Single phase 220V (50/60HZ)	160 kg

LJ - TYPE SUPER POWERFUL DEMAGNETIZER

HD-680AD (Automatic detect power system)



- LJ - type demagnetizer can use three sides to demagnetize and the workpiece hang on through the machine also only move the machine to demagnetize.
- Suitable for demagnetization for large workpiece, thick steel plate, and mould tools.

Model	HD-680AD
Input Voltage	AC 220V/380V 3Ø 12A
Duty Cycle	Continuous use
Weight	170kg

PLATE-TYPE SUPER POWERFUL DEMAGNETIZER

HD-620AD (Automatic detect power system)



- Plate-type floor stand demagnetization.
- The diamagnetic surface widest, strong magnetic induction, ergonomic design, easy to operation.
- Suitable for demagnetization for magnetic metal workpieces, and mould tools.

Model	HD-620AD
Input Voltage	AC 220V/380V 3Ø 12A
Duty Cycle	Continuous use
Weight	105kg

SUPER POWERFUL DEMAGNETIZER

HD-500AD (Automatic detect power system)



- Table-type workpiece movement for demagnetization.
- Suitable for demagnetization for large workpiece, thick steel plate, and mould tools.
- Demagnetization capability 400mm.
- Demagnetization thickness 110mm.

Model	HD-500AD
Input Voltage	AC 220V/380V 3Ø 10A
Duty Cycle	Continuous use
Weight	70KG

SUPER POWERFUL DEMAGNETIZER

HD-420AD (Automatic detect power system)

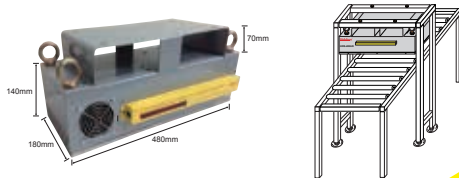


- Table-type workpiece movement for demagnetization.
- Suitable for demagnetization for large workpiece, thick steel plate, and mould tools.
- Demagnetization capability 400mm.
- Demagnetization thickness 70mm.

Model	HD-420AD
Input Voltage	AC 220V/380V 3Ø 8A
Duty Cycle	Continuous use
Weight	40KG

HANG-TYPE DEMAGNETIZER

HD-480AD (Automatic detect power system)



- Hang-type demagnetizer, directly demagnetize in the production line.
- Suitable for workpiece demagnetized on conveyor.
- Demagnetization capability width 460mm.

Model	HD-480AD
Input Voltage	AC 220V/380V 3Ø 10A
Duty Cycle	Continuous use
Weight	40KG

POWERFUL DEMAGNETIZER

HD-380



- Table-type workpiece movement for demagnetization.
- Suitable for demagnetization for the parts, accessories, and tools.
- Demagnetization capability 160mm.

Model	HD-380
Input Voltage	AC 110V/220V 10A

TUNNEL DEMAGNETIZER

HD-1015 HD-1525

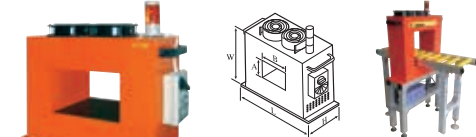


- To pass through the opening for demagnetization.
- Suitable for demagnetization for a quantity of small-type workpiece or parts.
- Four sides of the opening are demagnetized evenly.

Model	HD-1015	HD-1525
Input Voltage	AC 220V/380V 5A	AC 220V/380V 12A
Gate	100x150	150x250

TUNNEL DEMAGNETIZER

HD-2545

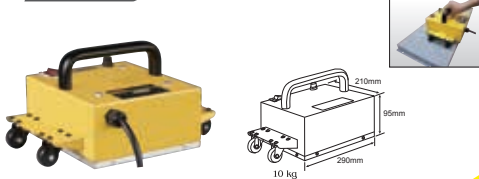


- To pass through the opening for demagnetization.
- Suitable for demagnetization for a quantity of small-type workpiece or parts.
- Four sides of the opening are demagnetized evenly.

Model	HD-2545
Input Voltage	220V/32A 380V/18A
Gate	250x450

MOVABLE DEMAGNETIZER

HD-270



- Suitable for demagnetization for large steel plate.
- Easy move on the steel plate by hand grip and wheel.

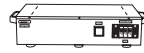
Model	HD-270
Input Voltage	AC 110V/220V 5A
Duty Cycle	Continuous use
Weight	10KG

AUTOMATIC DETECT POWER SYSTEM

AD-11

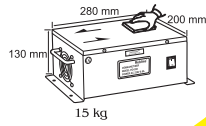


- Automatic detect of the workpiece and turn on the power.
- After workpiece leaving 10 to 30 seconds to turn off the power automatically.
- Fully electronic non-contact control, reliable and durable.
- Power saving effect up to 60%.



POWERFUL DEMAGNETIZER

HD-280

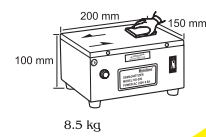


- Table-type workpiece movement for demagnetization.
- Suitable for demagnetization for the parts, accessories, and tools.
- Demagnetization capability 160mm.

Model	HD-280
Input Voltage	AC110V/220V 5A

STANDARD DEMAGNETIZER

HD-200

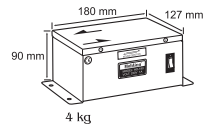


- Table-type workpiece movement for demagnetization.
- Suitable for demagnetization for various parts, accessories, and tools.
- Demagnetization capability 110mm.

Model	HD-200
Input Voltage	AC110V/220V 3.3A

PLATE-TYPE DEMAGNETIZER

HD-180

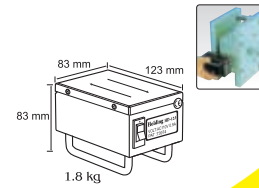


- Table-type workpiece movement for demagnetization.
- Suitable for demagnetization for the parts, accessories, and tools.
- Demagnetization capability 80mm.

Model	HD-180
Input Voltage	AC110V/220V 2A

HANDY-TYPE DEMAGNETIZER

HD-123

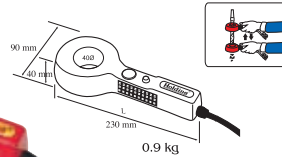


- Handy-type movement for demagnetization.
- Suitable for demagnetization for steel plate mould tools, and tool steel.
- Demagnetization capability 60mm.

Model	HD-123
Input Voltage	AC110V/220V 0.9A

CIRCULAR-TYPE DEMAGNETIZER

HDO-40

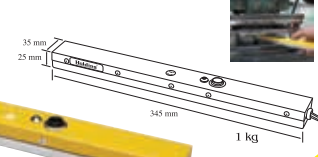


- Handy circular type workpiece movement for demagnetization.
- Suitable for demagnetization for bar-type materials, driller bits, and tools.

Model	HDO-40
Input Voltage	AC110V/220V 0.8A

BAT-TYPE DEMAGNETIZER

HDB-210

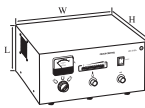


- Handy Bat type for demagnetization.
- Suitable for demagnetization for build-in chute.

Model	HDB-210
Input Voltage	AC110V/220V 1.2A

MAGNETIC CHUCK CONTROLLER DEMAGNETIZER

HD-510A (10A, 15A, 20A)



- Suitable for powerful magnetic chuck.
- The magnetic force of chuck can be adjusted precisely with LED voltage and current (ampere) display unit.
- Current capacity 10A, 15A, 20A, demagnetization time 6~15 seconds.
- Suitable for various magnetic chucks of different brands.

Model	HD-510A(10A, 15A, 20A)
Input Voltage	AC110V/220V /380V (single phase)
HD-510-10A	150 x 330 x 260 mm 15 kg
HD-510-15A	150 x 330 x 260 mm 20 kg
HD-510-20A	180 x 385 x 295 mm 32 kg

MAGNETIC CHUCK CONTROLLER DEMAGNETIZER

WL-115C



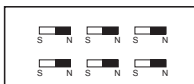
- Suitable for demagnetization for standard magnetic chuck.
- The magnetic force of chuck can be adjusted precisely with LED voltage and current (ampere) display unit.
- Current capacity 10A, 15A, 20A, demagnetization time.

Model	WL-115C
Input Voltage	AC110V/220V (single phase)

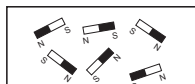
DEMAGNETIZER

APPLICATIONS Suitable for demagnetization for parts, accessories, hand tools, steel plate, mould tools, cutting tools.

PRINCIPLE Using the AC power induce an alternating magnetic field. Then the workpiece pass through, it can remove the workpiece residual magnetism surface.



Before demagnetize of molecular arrangement



After demagnetize of molecular arrangement is disarrangement

SELECTION METHOD • Please follow the shape of the workpiece (with magnetic material) of the size, quantity and manufacturing environment to select suitable demagnetizer. Select an area covering more than workpiece is better.

• Please follow the A to B direction of the movement. Workpiece (with magnetic material) must be away from the ends of demagnetizer about 10CM demagnetization will have more effect.

MATERIAL Apply to rapid steel, bearing steel, nickel chrome steel, spring steel, 403 stainless steel, etc.

www.holding.com.tw

Quality . New development . Patent

the **SPINner** Come from to revolve
the bouncing strong strength ●●●●●●



Patented: In Taiwan, China, Korea, Italy, Germany and USA.

A series products have obtained the European CE certification. ROHS certification.

Patented products. Not permitted for counterfeiting.

2014.11

SINCE 1983



HOLDING ELECTRONICS CO., LTD.

NO.31, CHAOGUEI RD., TAICHUNG 40755, TAIWAN
TEL: 886-4-22511479 . 22541893
FAX: 886-4-22553626
E-mail: hd@holding.com.tw

